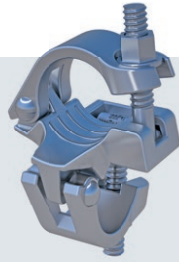


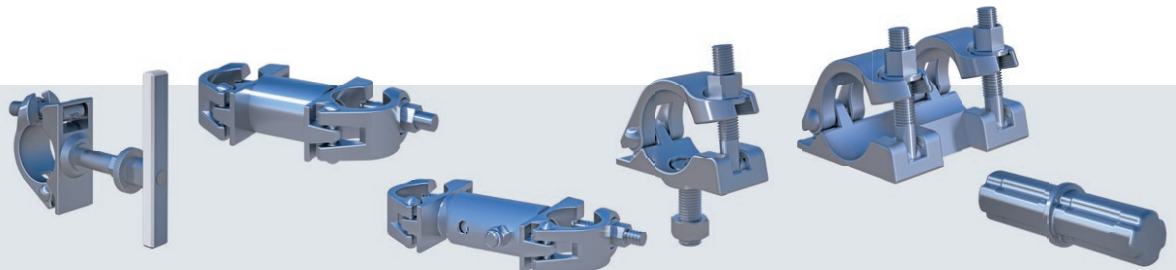


TECH INFO  
COUPLERS AND ACCESSORIES AT A GLANCE

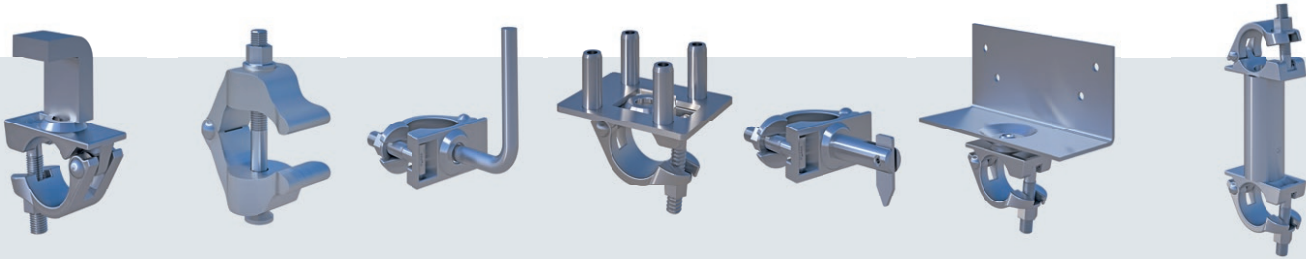
IT'S ALL ABOUT CONNECTIONS:  
**COUPLERS**  
OVERVIEW



	<b>Standard coupler BB</b>				<b>Swivel coupler B</b>				<b>Semi-coupler</b>		<b>Shore coupler</b>	
	<i>metric screw</i>		<i>rapid fastening screw</i>		<i>metric screw</i>		<i>rapid fastening screw</i>					
<b>Part No.</b>	04963	04962	04963S	04962S	04960	04961	04960S	04961S	00497	00495	00444	00445
<b>Wrench Size</b>	AF 19	AF 22	AF 19	AF 22	AF 19	AF 22	AF 19	AF 22	AF 19	AF 22	AF 19	AF 22
<b>Info (dimensions in mm)</b>												
<b>Tightening Torque</b>	50 Nm		50 Nm		50 Nm		50 Nm		50 Nm		50 Nm	
<b>Permissible Load</b>	9.1 kN / 15.1 kN		9.1 kN / 15.1 kN		9.1 kN		9.1 kN		9 kN			
<b>EN 74</b>	✓	✓	✓	✓	✓	✓	✓	✓	✓	✓	✓	✓
<b>Weight ca. kg</b>	1.30		1.30		1.40		1.40		0.70		1.10	
<b>Properties</b>	Prescribed 90 degree angle, BB certificate and test symbol, heavy-duty, ribbed design, collar nuts fitted				Mounting possible at any angle, drop-forged and hot-galvanised, heavy-duty, ribbed design, collar nuts fitted				For screwing on or welding on		High flexibility: for scaffolding tubes with larger wall distances, for larger windows and façade areas	

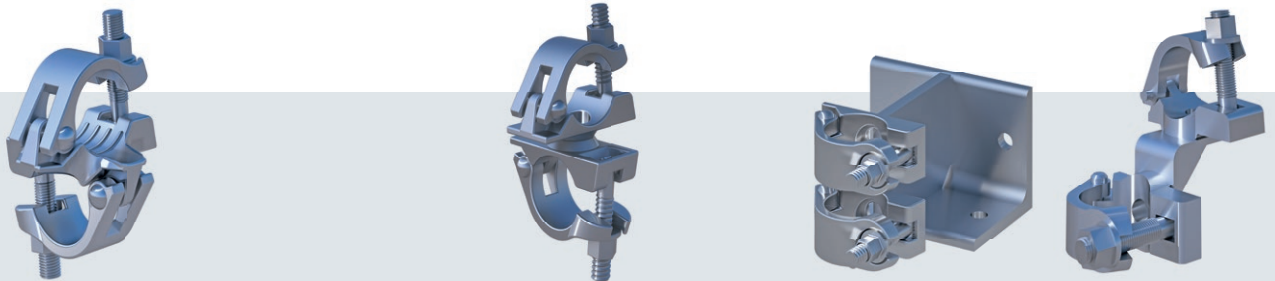


	<b>Multi-directional distance coupler</b>		<b>Handrail holder, metric</b>		<b>Handrail holder, tele</b>		<b>Screw-on coupler</b>		<b>Tension coupler</b>		<b>Tube connector</b>
<b>Part No.</b>	01442	01441	01926	01937	01935	01936	00464	00465	00494	00492	00377
<b>Wrench Size</b>	AF 19	AF 22	AF 19	AF 22	AF 19	AF 22	AF 19	AF 22	AF 19	AF 22	
<b>Info (dimensions in mm)</b>			RX, Axial dimension 128		PC, LA, Axial dimension 128						180
<b>Tightening Torque</b>	50 Nm		50 Nm		50 Nm		50 Nm		50 Nm		
<b>Permissible Load</b>									6.0 kN		
<b>EN 74</b>	✓	✓	✓	✓	✓	✓	✓	✓	✓	✓	✓
<b>Weight ca. kg</b>	1.20		1.60		2.13		0.70		1.60		1.00
<b>Properties</b>	Multi angle attachment of Keder rails to scaffold tubes, vertical frames, modular standards or lattice girders		For metric scaffold bays		For 07/09 scaffold bays		Semi-coupler with welded-on threaded bolt M 14 x 50 mm		To extend two scaffold tubes in combination with a tube connector		For scaffold tubes Ø 48.3 mm, in combination with a tension coupler for a tight and pressure-resistant connection



Subject to technical changes.

Carrier coupler		Universal girder clamp	Semi-coupler with support for toe board		Deck coupler with 4 pins	Gravity lock coupler		Wooden beam coupler, swivel		Parallel coupler	
00453	00454	00087	00479	00480	07230	00447	00448	00450	00451	01511	01512
AF 19	AF 22		AF 19	AF 22	AF 22	AF 19	AF 22	AF 19	AF 22	AF 19	AF 22
		for girders 16 - 70, 50 x 100									
50 Nm			50 Nm			50 Nm		50 Nm		50 Nm	
9 kN					9 kN						
✓	✓		✓	✓		✓	✓	✓	✓	✓	✓
1.10		2.20	1.20		1.33	0.80		2.00		1.90	
Welded-on steel angle, angle height 50 mm		Robust design, drop-forged and hot-galvanised, max. clamping depth 40 mm	For the attachment of a (system independent) toe board		For use e.g. on lattice girders, the pins are fitting for SUPER decks	For independent installation of railings / diagonals, quick creation of side protection or diagonal braces		Attachment of wooden beams to scaffolding structures at any angle, with drill holes for affixing the wooden beams		Connection between two scaffold tubes, modular standards or vertical frames running parallel to one another	



Standard reduction coupler					Standard reduction swivel coupler					Wall/Ceiling coupler		Lattice girder coupler	
00106	00107	00108	00109	00111	00138	00139	00140	00141	00142	07212	07214	E04RS1518	E04RS0559
AF 19 - AF 22 on request					AF 19 - AF 22 on request					AF 19	AF 22	AF 19	AF 22
48 x 34	48 x 38	48 x 42	48 x 60	48 x 76	48 x 34	48 x 38	48 x 42	48 x 60	48 x 76				
50 Nm					50 Nm					50 Nm		50 Nm	50 Nm
9.1/15.1 kN					9.1 kN							9.1 kN	
✓	✓	✓	✓	✓	✓	✓	✓	✓	✓	✓	✓	✓	✓
1.10	1.10	1.10	1.20	1.90	1.10	1.10	1.10	1.70	1.80	4.40	4.40	1.60	1.60
For 90 degree connection of tubes having different diameters					For variable connection of tubes having different diameters					Universal element for attachment of scaffolding structures to ceilings or walls		For the right-angled connection of lattice girders and vertical tubes	

